



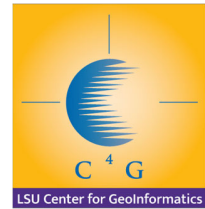
# Set-Up Trimble Access to Utilize LSU C4Gnet.XYZ

Trimble Access Version 2013-40

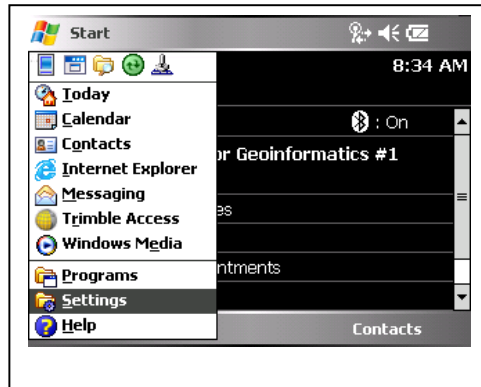
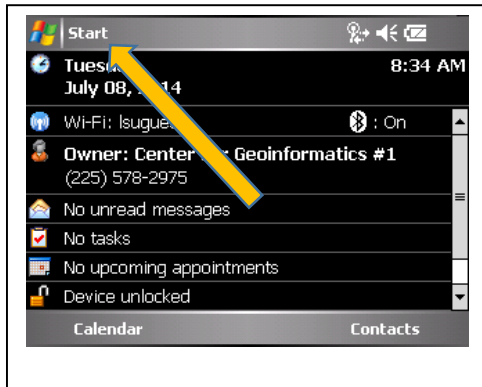
*July 2014*

## LSU C4G Tech-aids

- This document is intended to be an aid to subscribers of C4Gnet.XYZ. As such specific examples are shown with particular items of hardware and/or software. It is not intended to be a definitive manual of operation nor are the examples shown to be construed as endorsements.
- C4G hopes users find this useful and informative but C4G has no knowledge or control of all the circumstances that constrain users.
- Proper use of this aid is subject to the experience, knowledge and competence of the user who is solely responsible for the results of his actions.

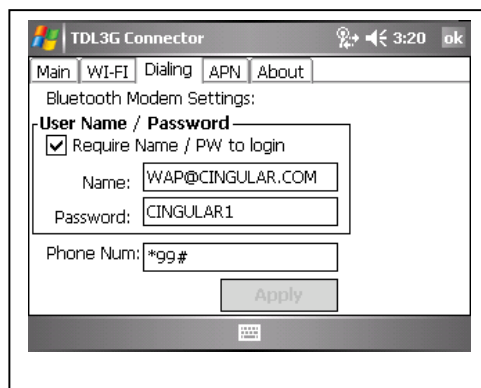
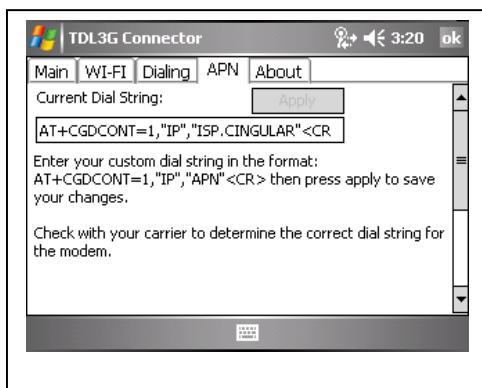
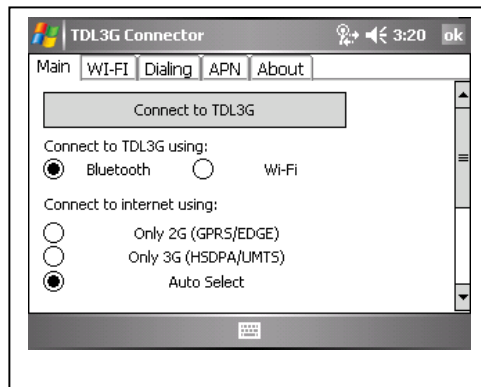
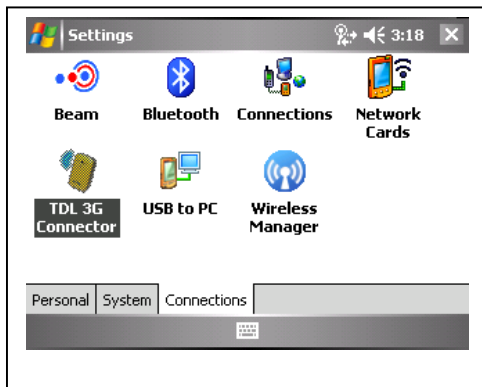


## Go to Settings First



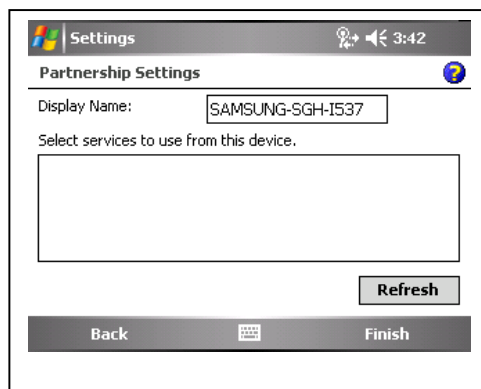
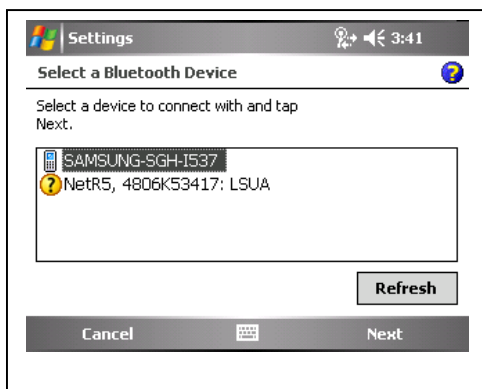
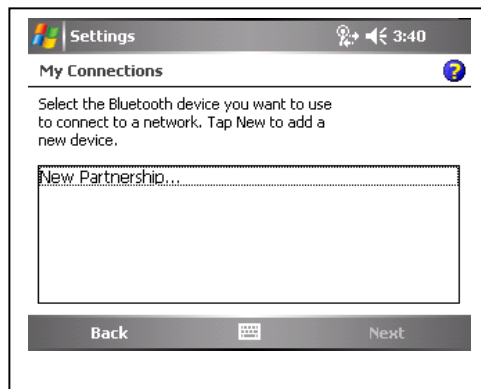
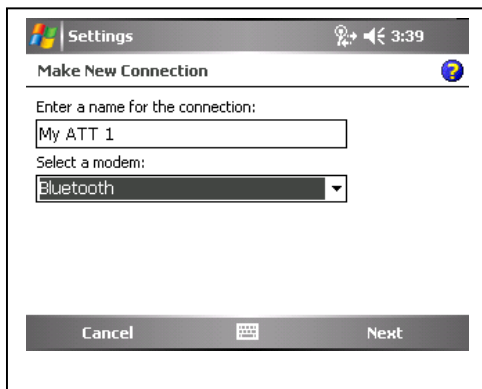
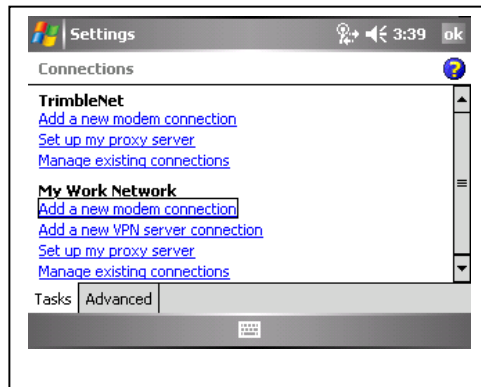
## Modem Connections for TDL 3G

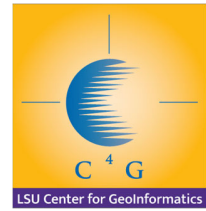
Skip if using a different modem.



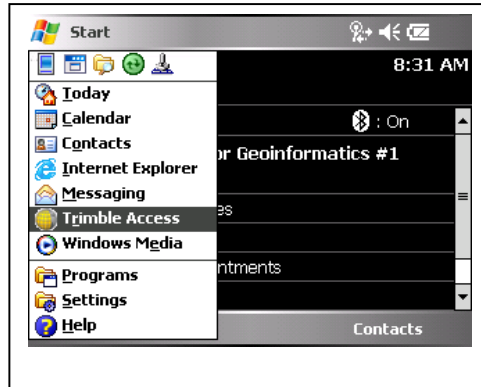
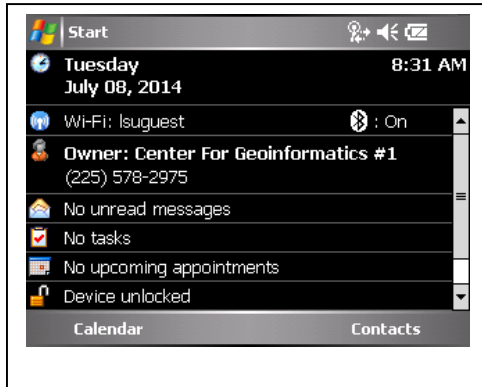
## Modem Connections for ATT Cell Phone

**Skip if using a different modem.**

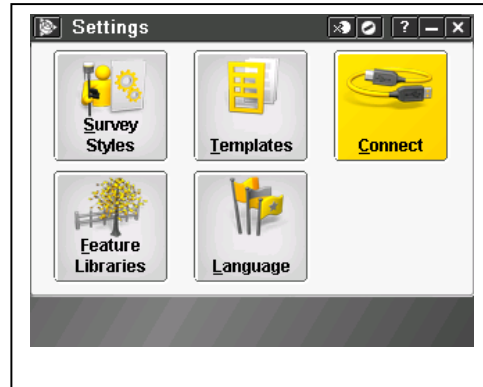




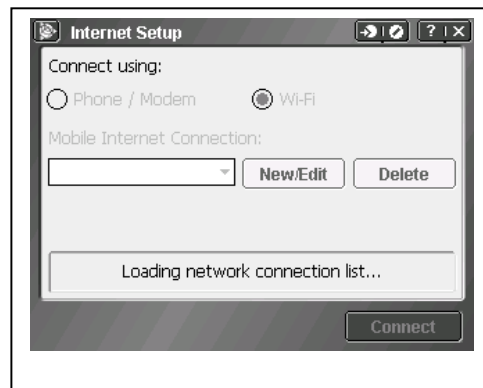
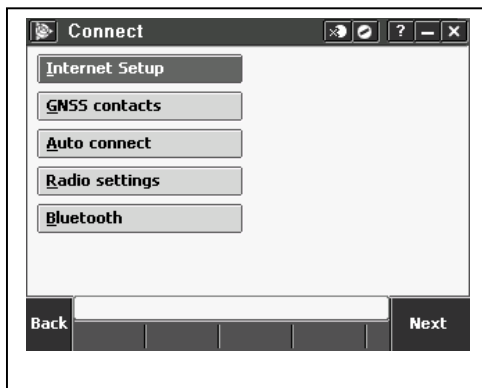
## Start Trimble Access



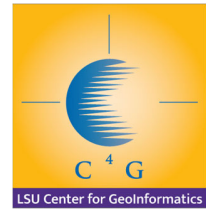
## Establishing Connections



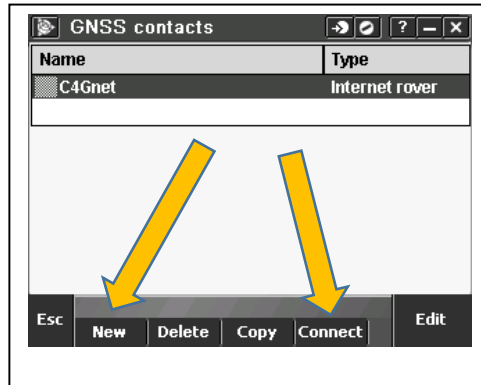
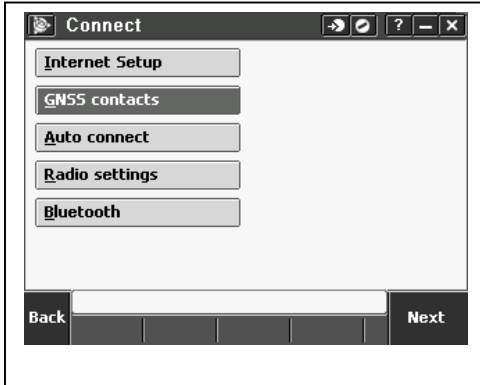
## Internet Setup



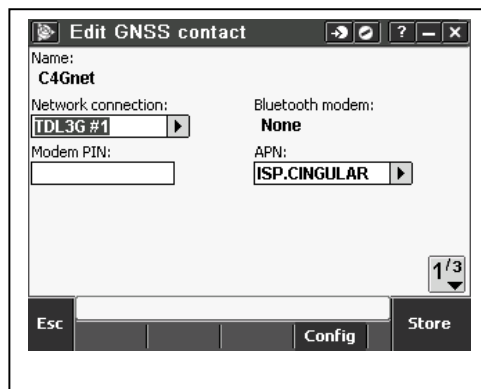
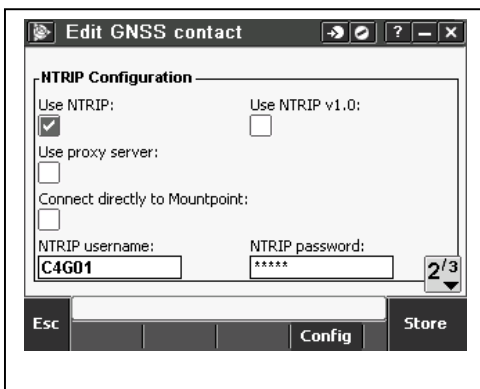
The next step will depend upon the connection method. It will usually be a phone/modem. It may rarely be wi-fi. When one picks Phone/Modem the list of paired devices will appear in the drop-down list. If a new connection is to be established click New/Edit. If the procedures on page 2 and 3 were followed one simply chooses from the drop-down list.



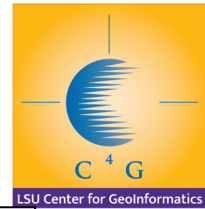
## GNSS Contacts



Choose **Connect** if C4Gnet already exists. Choose **New** if not. The necessary settings follow.

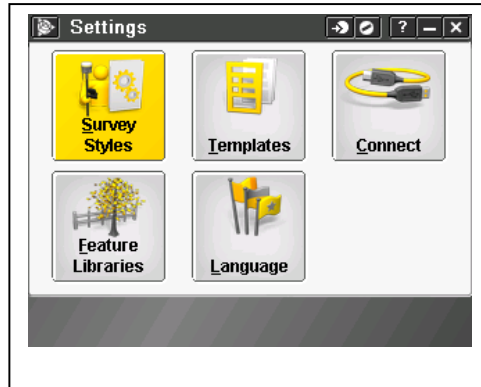


The desired network connection previously setup will be inserted. (The NTRIP username and Network Connection and APN are example and likely NOT to be correct.)

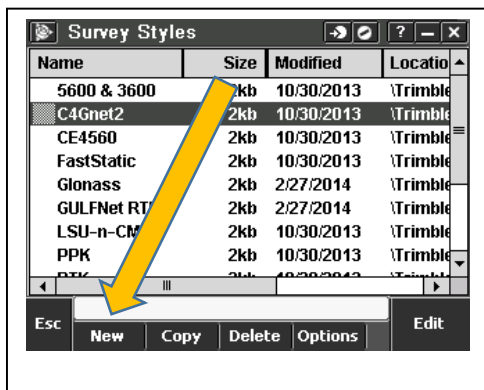
A screenshot of the 'Edit GNSS contact' window. The 'IP Address' field contains 'C4GNET.XYZ' and the 'IP Port' field contains '9000'. The 'Connection type' dropdown menu is set to 'Mobile internet'. The 'Send user identity info' checkbox is unchecked. The window has a '3/3' indicator in the bottom right corner and 'Esc', 'Config', and 'Store' buttons at the bottom.A screenshot of the 'Edit GNSS contact' window showing the 'NTRIP Configuration' section. The 'Use NTRIP' checkbox is checked, and the 'Use NTRIP v1.0' checkbox is unchecked. The 'Use proxy server' and 'Connect directly to Mountpoint' checkboxes are also unchecked. The 'NTRIP username' field contains 'C4G01' and the 'NTRIP password' field contains '\*\*\*\*\*'. A yellow arrow points to the 'NTRIP password' field. The window has a '2/3' indicator in the bottom right corner and 'Esc', 'Config', and 'Store' buttons at the bottom.

Entering a URL (c4gnet.xyz) is more desirable than a numerical IP address because if the servers change IP, the URL stays the same simply pointing to the new IP. If the numerical IP is required, contact C4G for the most current. Click **Store**.

## Picking the Survey Style

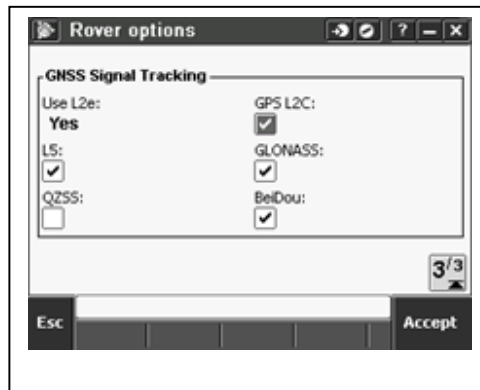
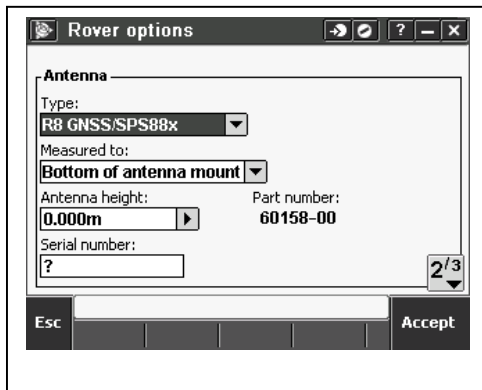
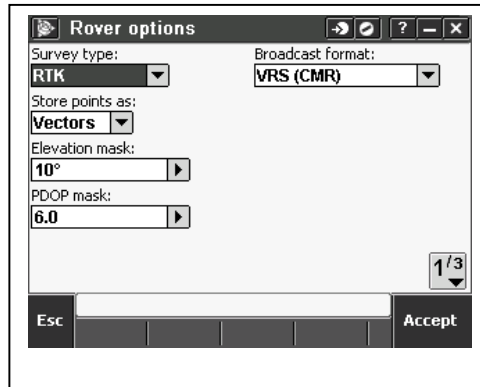
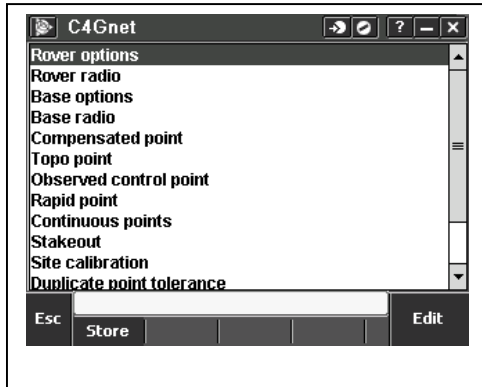


Create a **NEW** Survey Style.

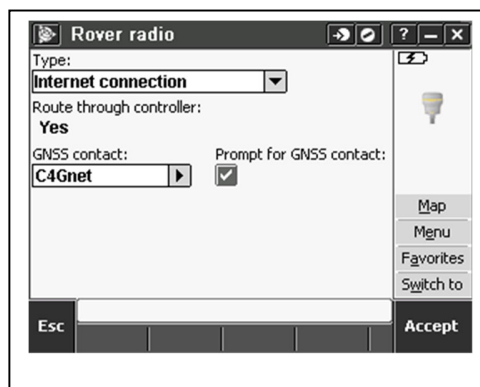
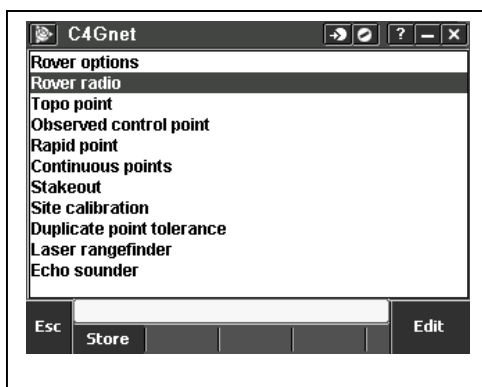


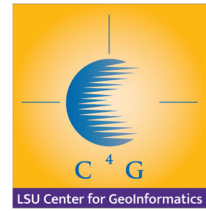


## Rover Options



## Rover Radio





## Topo Point

**C4Gnet**

- Rover options
- Rover radio
- Topo point**
- Observed control point
- Rapid point
- Continuous points
- Stakeout
- Site calibration
- Duplicate point tolerance
- Laser rangefinder
- Echo sounder

Esc      Store      Edit

**Topo point**

Auto point step size:       Quality control: **QC 1 & QC 2**

Auto store point:       Occupation time:

Number of measurements:

**Precision**

Auto tolerance:

Esc      Accept

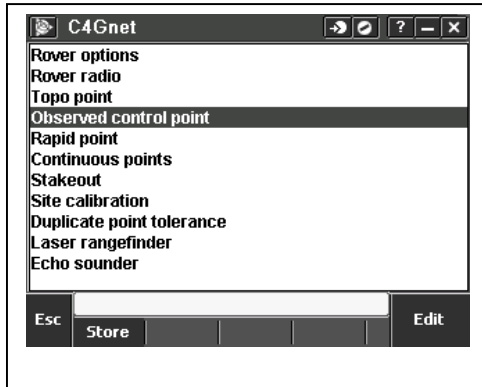
**Topo point**

Store RTK initialized only:

Auto abandon:

Esc      Accept

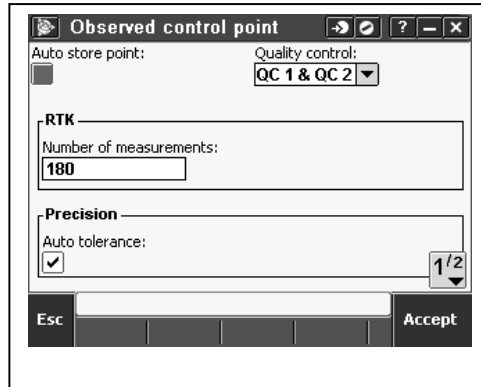
## Observed Control Point



C4Gnet

- Rover options
- Rover radio
- Topo point
- Observed control point**
- Rapid point
- Continuous points
- Stakeout
- Site calibration
- Duplicate point tolerance
- Laser rangefinder
- Echo sounder

Esc Store Edit



Observed control point

Auto store point:  Quality control: QC 1 & QC 2

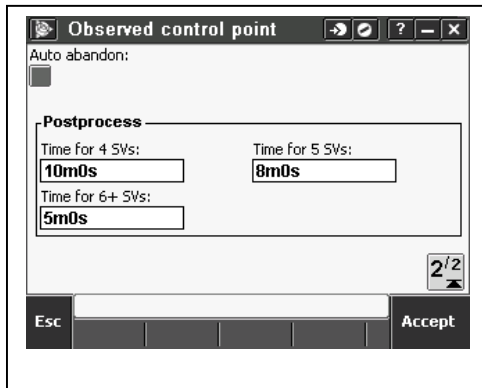
**RTK**

Number of measurements: 180

**Precision**

Auto tolerance:

Esc Accept



Observed control point

Auto abandon:

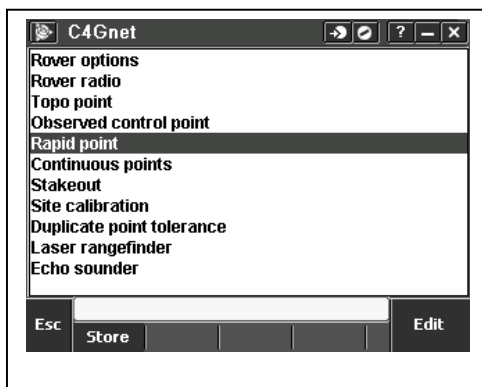
**Postprocess**

Time for 4 SVs: 10m0s Time for 5 SVs: 8m0s

Time for 6+ SVs: 5m0s

Esc Accept

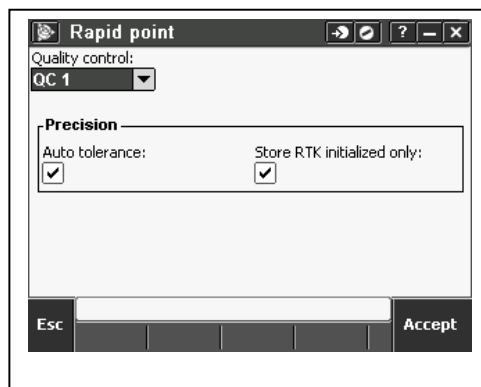
## Rapid Point



C4Gnet

- Rover options
- Rover radio
- Topo point
- Observed control point
- Rapid point**
- Continuous points
- Stakeout
- Site calibration
- Duplicate point tolerance
- Laser rangefinder
- Echo sounder

Esc Store Edit



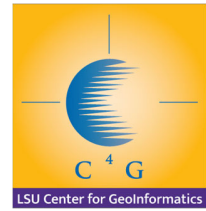
Rapid point

Quality control: QC 1

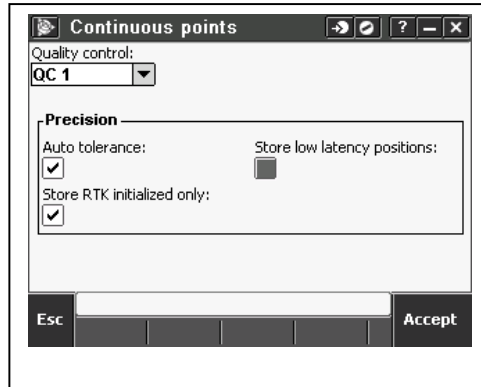
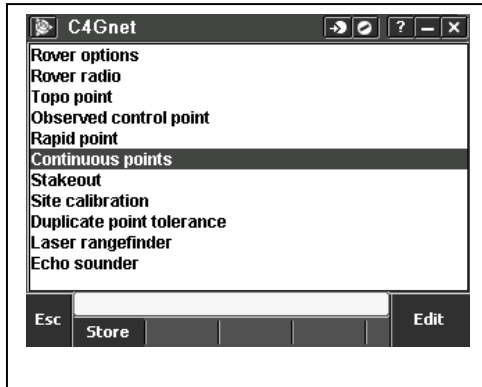
**Precision**

Auto tolerance:  Store RTK initialized only:

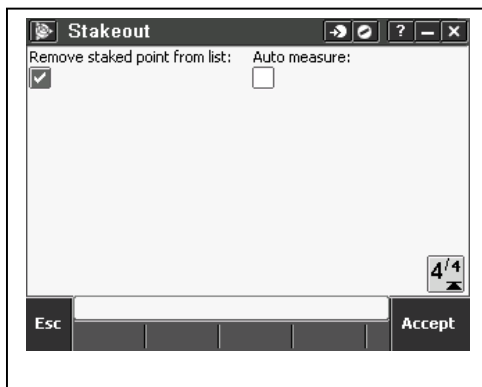
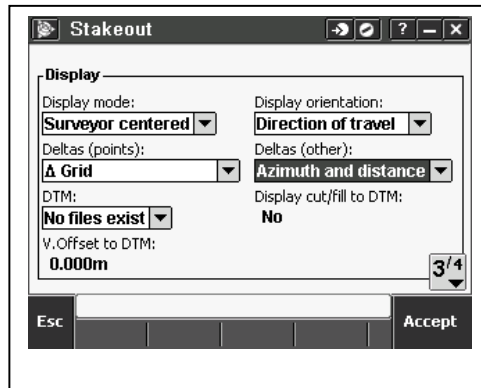
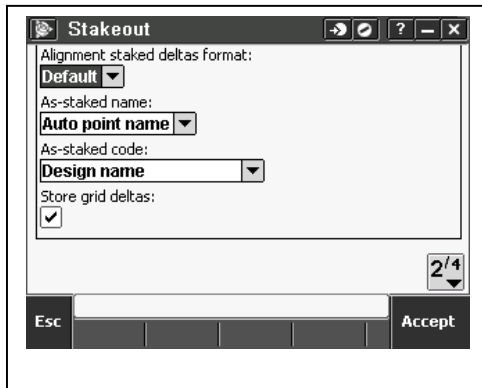
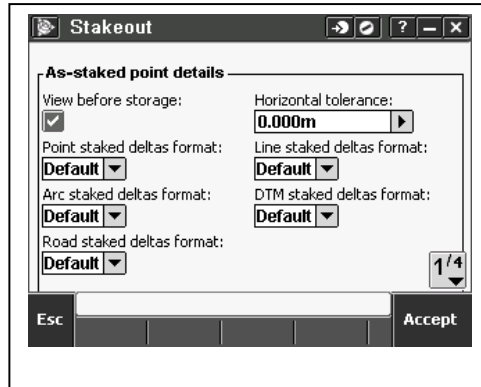
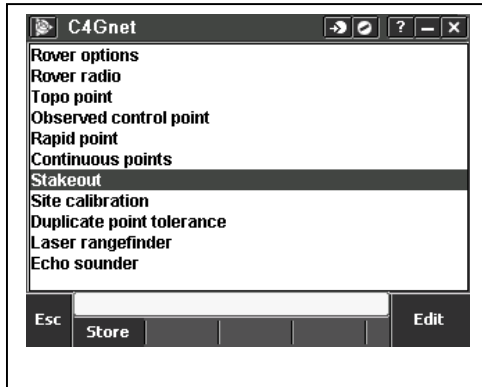
Esc Accept



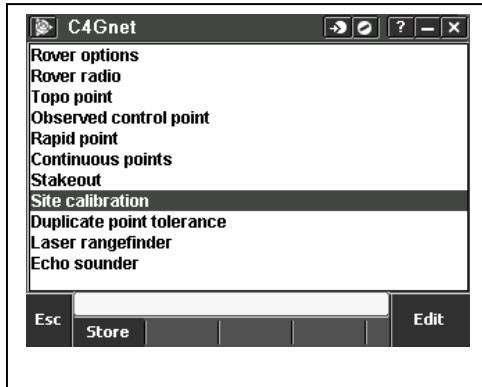
## Continuous Points



# Stakeout



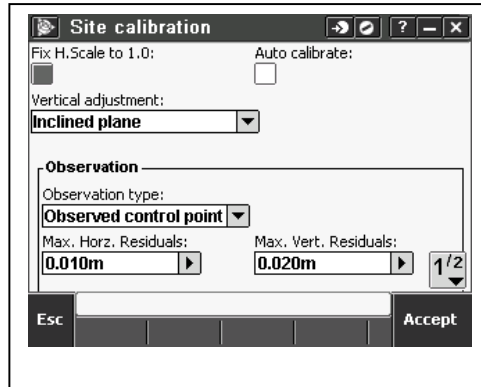
## Site Calibration



C4Gnet

- Rover options
- Rover radio
- Topo point
- Observed control point
- Rapid point
- Continuous points
- Stakeout
- Site calibration**
- Duplicate point tolerance
- Laser rangefinder
- Echo sounder

Esc Store Edit



Site calibration

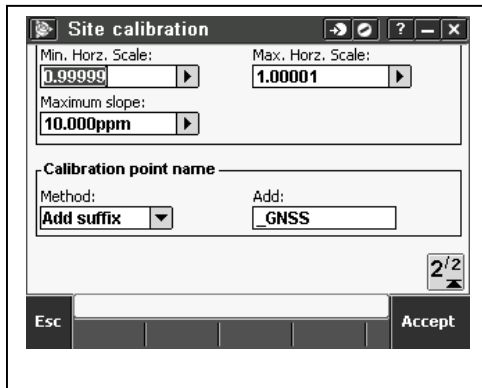
Fix H.Scale to 1.0:  Auto calibrate:

Vertical adjustment:  
Inclined plane

Observation:  
Observation type: Observed control point

Max. Horz. Residuals: 0.010m Max. Vert. Residuals: 0.020m

Esc Accept



Site calibration

Min. Horz. Scale: 0.99999 Max. Horz. Scale: 1.00001

Maximum slope: 10.00ppm

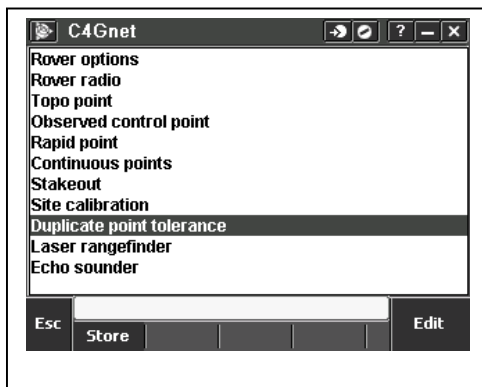
Calibration point name

Method: Add suffix Add: GNSS

2/2

Esc Accept

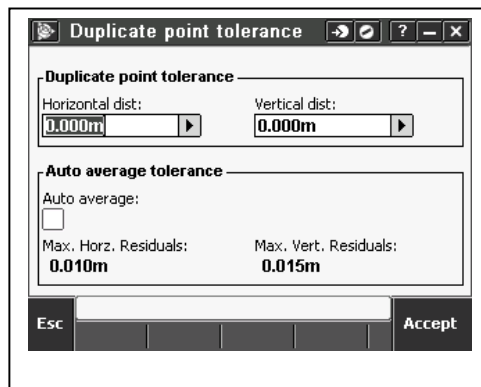
## Duplicate Point Tolerance



C4Gnet

- Rover options
- Rover radio
- Topo point
- Observed control point
- Rapid point
- Continuous points
- Stakeout
- Site calibration
- Duplicate point tolerance**
- Laser rangefinder
- Echo sounder

Esc Store Edit



Duplicate point tolerance

Horizontal dist: 0.000m Vertical dist: 0.000m

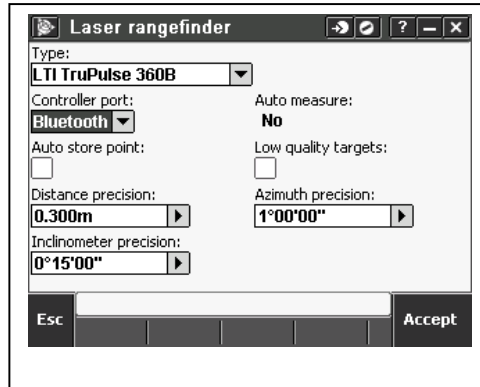
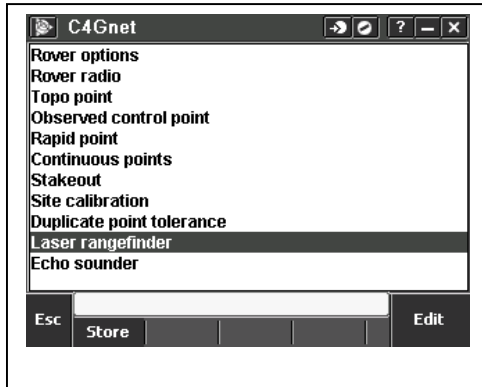
Auto average tolerance

Auto average:

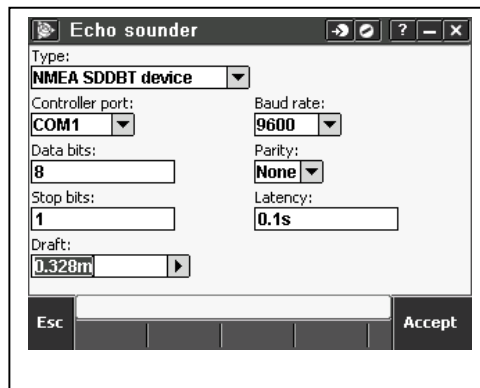
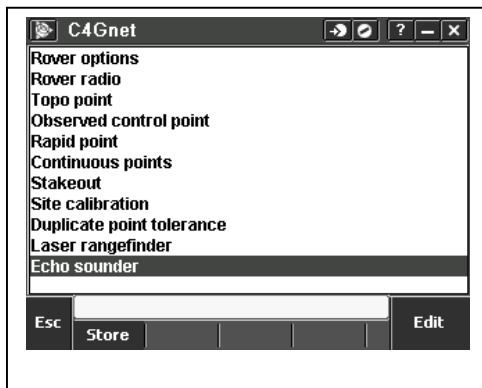
Max. Horz. Residuals: 0.010m Max. Vert. Residuals: 0.015m

Esc Accept

## LASER Rangefinder



## Echo Sounder



J. Anthony Cavell, PLS, CFedS

July 2014