

Coastal Issues Facing Southeast Coastal Louisiana What to Do?

Tim Osborn





Stressing Continued

Platform at Galveston Pass wiped out by
Hurricane Ike





19 2:26 PM

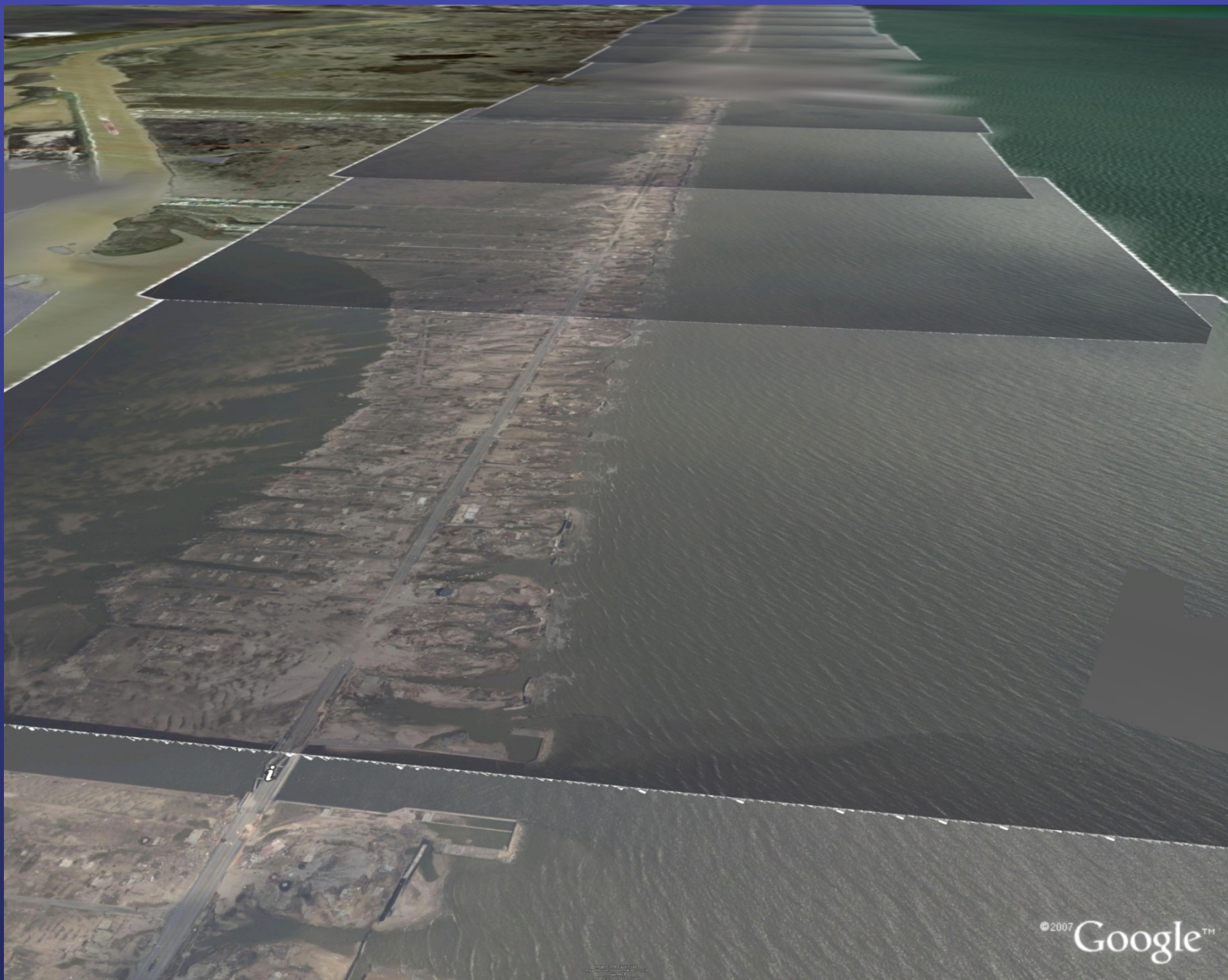


Pre and Post Hurricane Ike



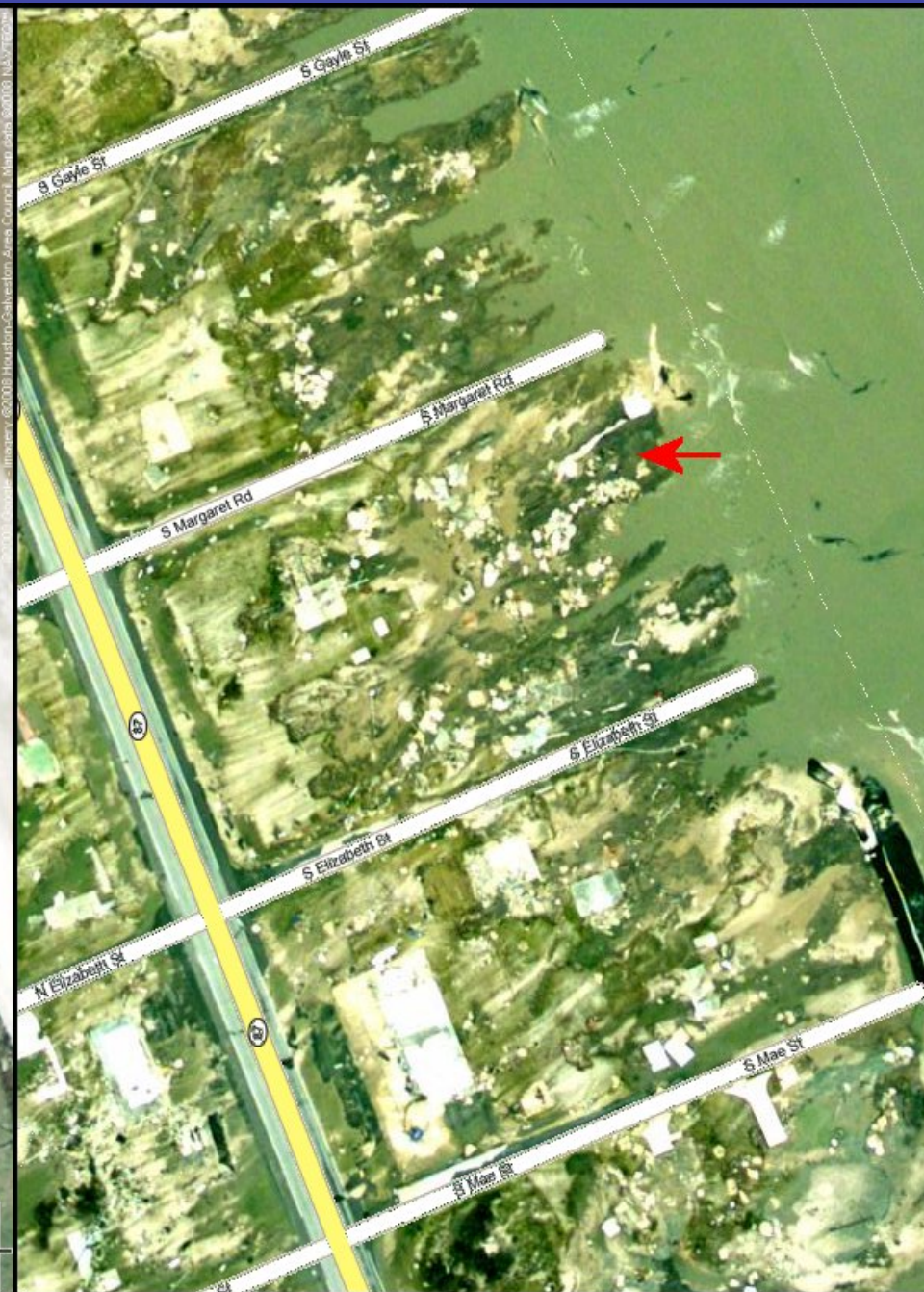
© 2007 Google™





© 2007 Google™



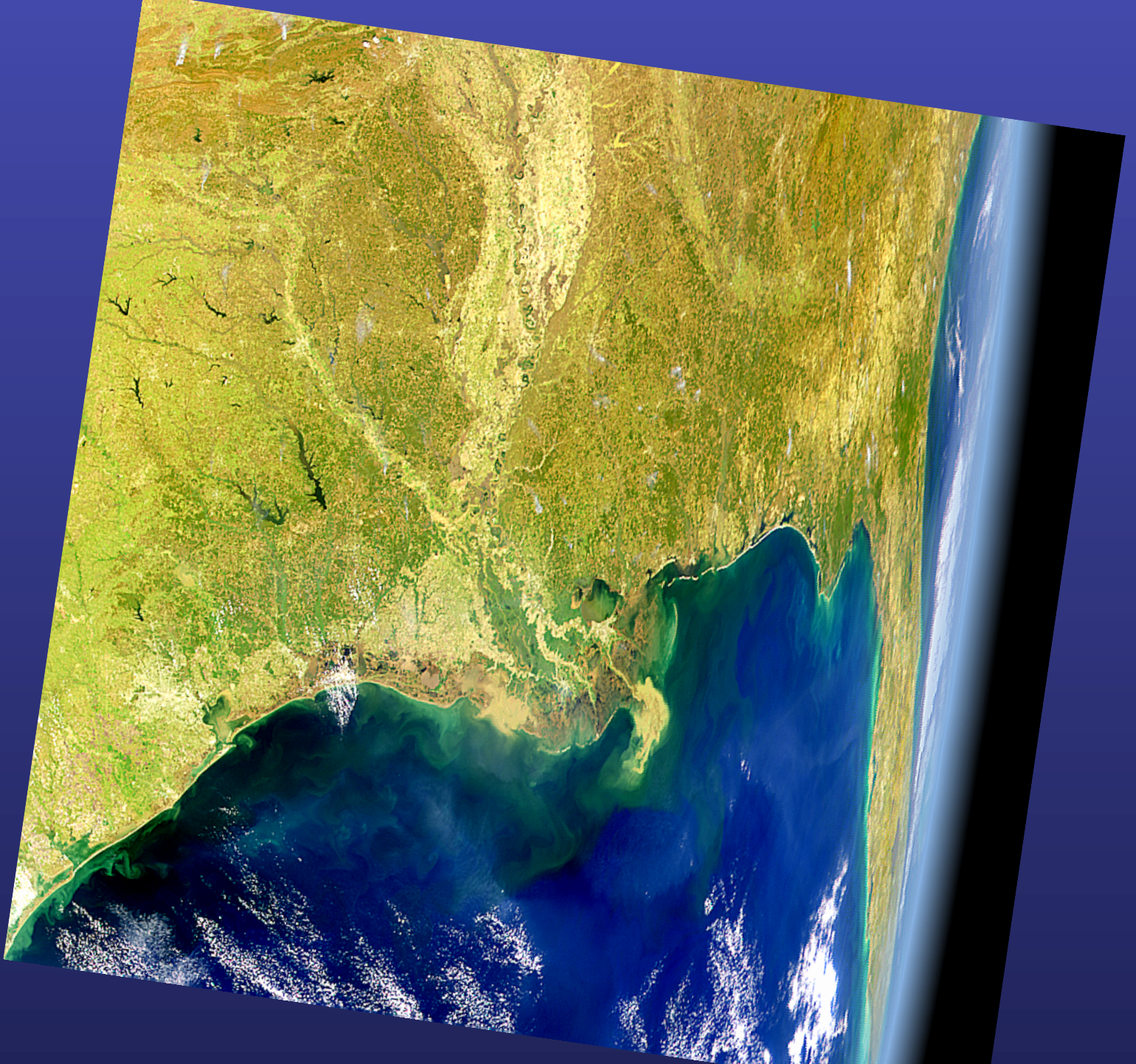


Imagery ©2008 Houston Collection Area Council, Houston, TX 77001, USA

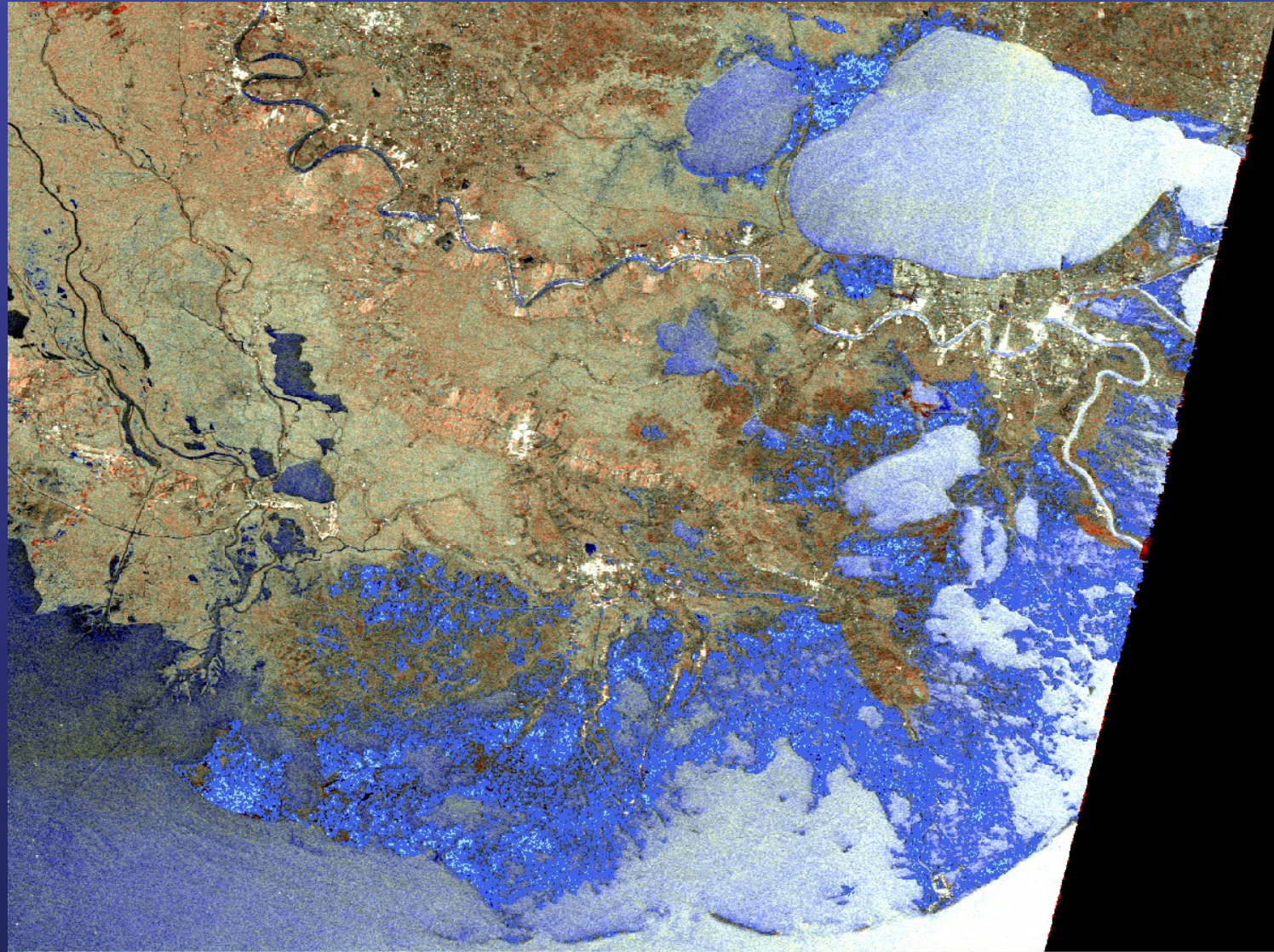
Damage from Hurricanes Ivan and Katrina



Dauphin Island, Alabama



Hurricane Ike Flooding Eastern Louisiana







South Lafourche
Levee District Levee
Southern Extent
During Hurricane Ike

Flooded Homes outside
South Lafourche Levee
District Levees and
Flooded Highway LA-1
to Port Fourchon and
Grand Isle

South Lafourche
Flood Gate now
converted to a Lock

Hurricane Ike Inundation South Lafourche Parish



Benchmark in Open Water on Fifi Island near Grand Isle



6. 2. 2004







Benchmark in Open Water in Hackberry Bay, South Lafourche Parish



The Future Challenge

- Accuracy and Efficiency are Key Goals
- Landscape Movement will See the Continued Loss of Static Marks
- It is not Enough to Match the Capabilities of Other States but to Exceed Them to Meet the Needs of Coastal Restoration and Protection Efforts, Infrastructure Projects and the Support of the Louisiana Economy

Thank You

Tim Osborn
NOAA

