



Set-Up Trimble Access to Utilize LSU C4Gnet

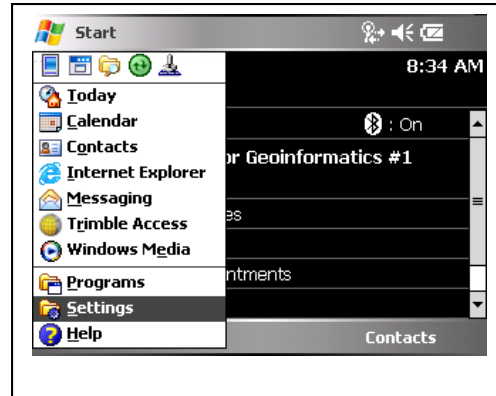
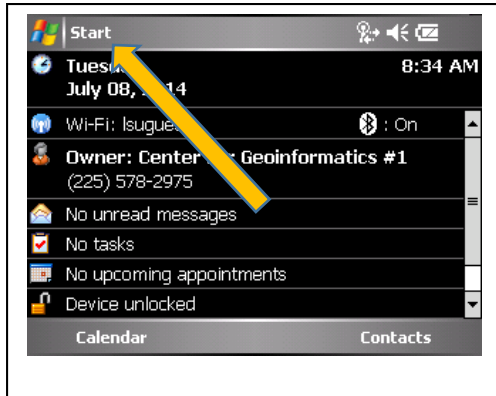
Trimble Access Version 2013-40

July 2014

LSU C4G Tech-aids

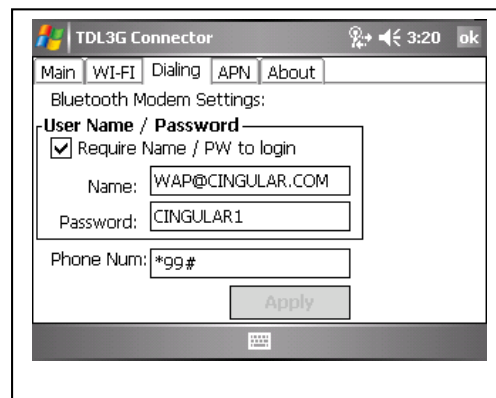
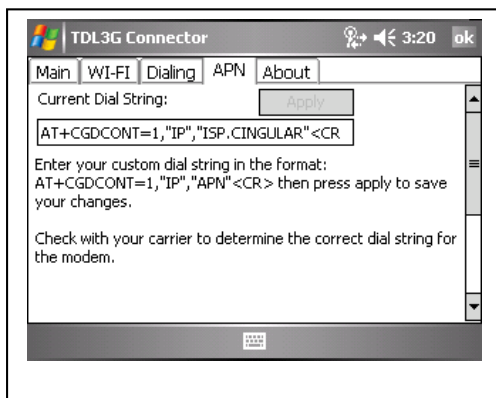
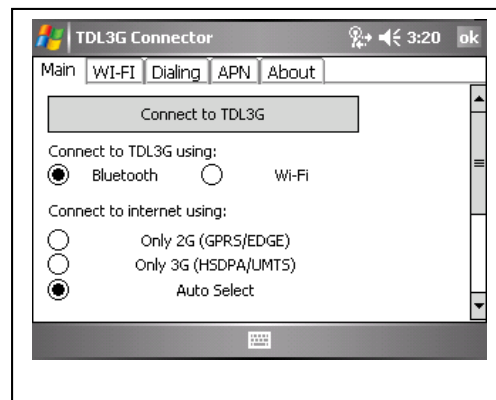
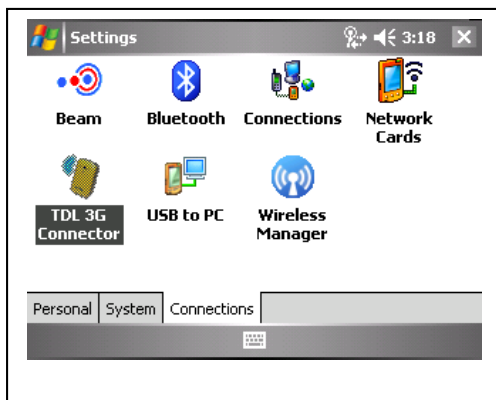
- This document is intended to be an aid to subscribers of C4Gnet. As such specific examples are shown with particular items of hardware and/or software. It is not intended to be a definitive manual of operation nor are the examples shown to be construed as endorsements.
- C4G hopes users find this useful and informative but C4G has no knowledge or control of all the circumstances that constrain users.
- Proper use of this aid is subject to the experience, knowledge and competence of the user who is solely responsible for the results of his actions.

Go to Settings First



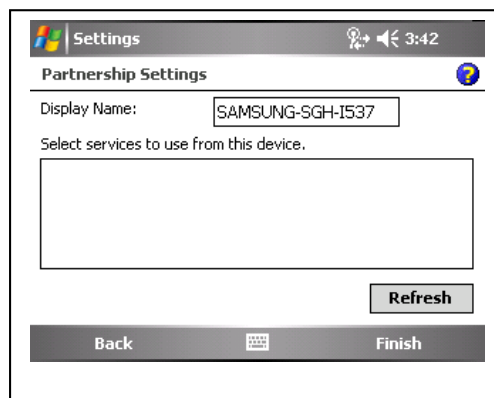
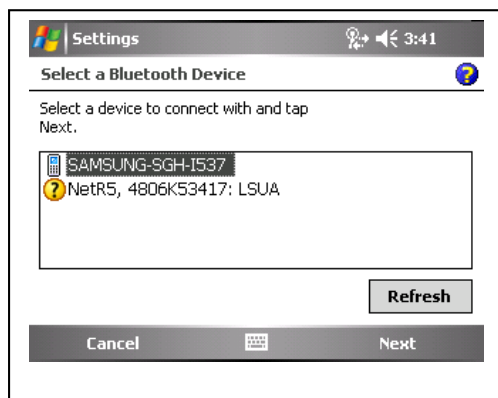
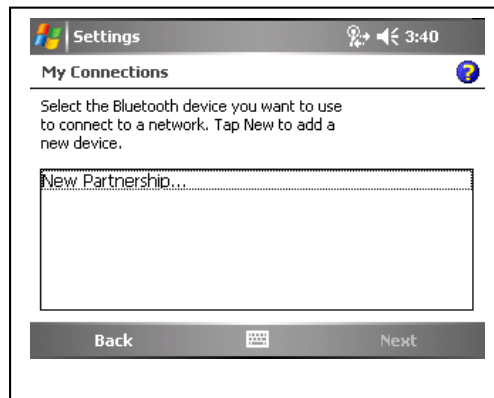
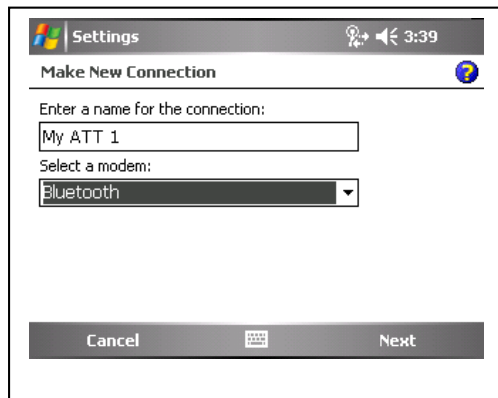
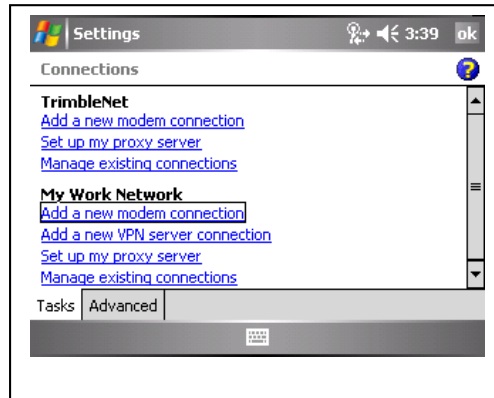
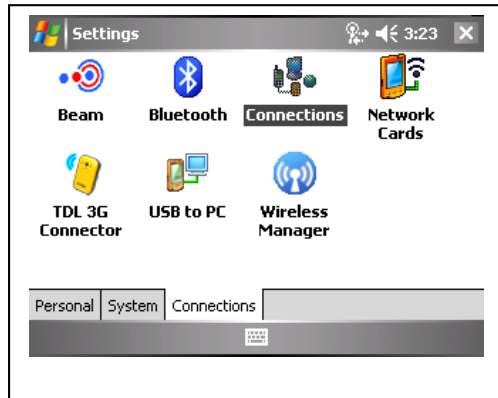
Modem Connections for TDL 3G

Skip if using a different modem.



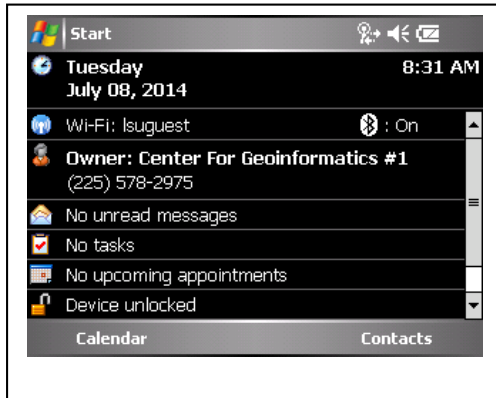
Modem Connections for ATT Cell Phone

Skip if using a different modem.

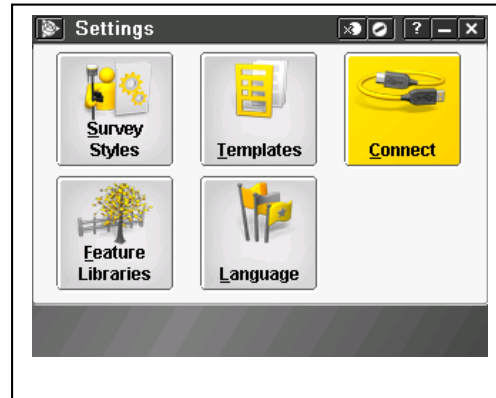




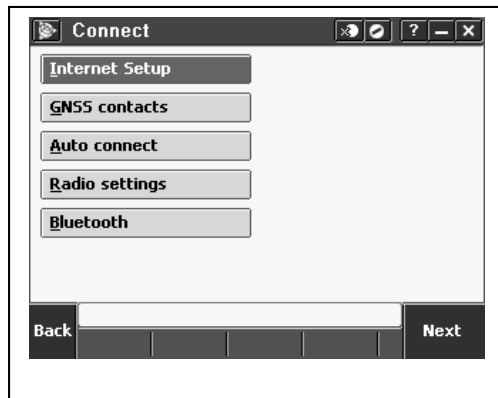
Start Trimble Access



Establishing Connections

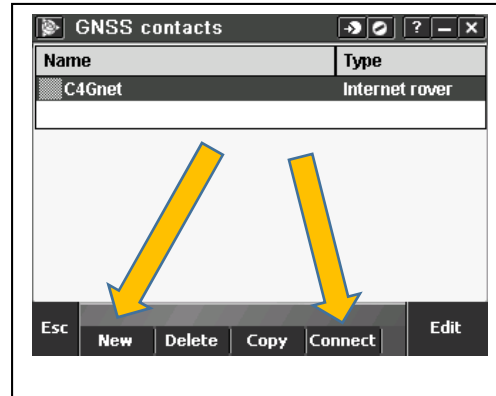
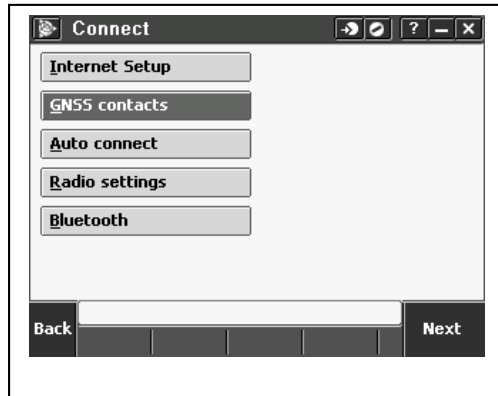


Internet Setup

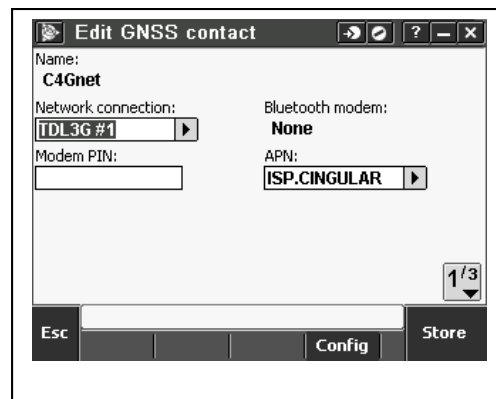
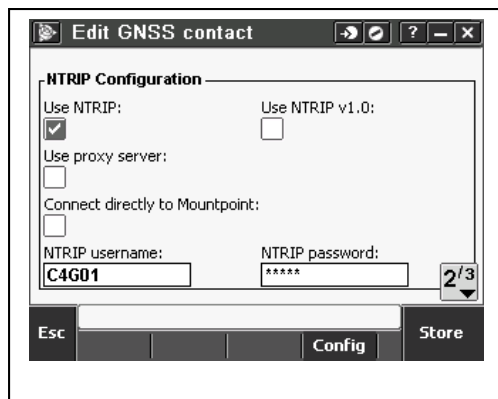


The next step will depend upon the connection method. It will usually be a phone/modem. It may rarely be wi-fi. When one picks Phone/Modem the list of paired devices will appear in the drop-down list. If a new connection is to be established click New/Edit. If the procedures on page 2 and 3 were followed one simply chooses from the drop-down list.

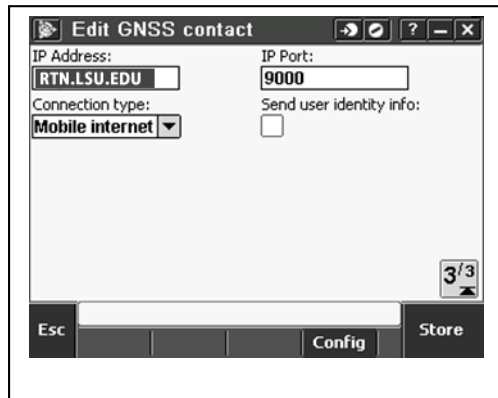
GNSS Contacts



Choose **Connect** if C4Gnet already exists. Choose **New** if not. The necessary settings follow.



The desired network connection previously setup will be inserted. (The NTRIP username and Network Connection and APN are example and likely NOT to be correct.)



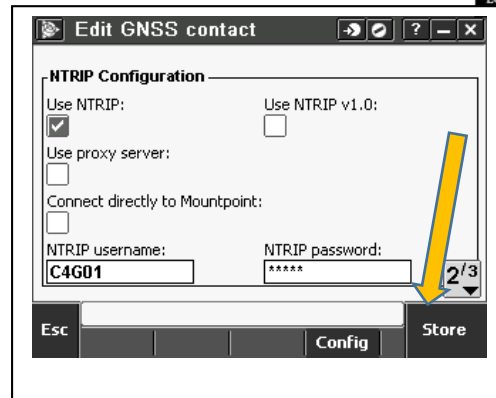
Edit GNSS contact

IP Address: RTN.LSU.EDU IP Port: 9000

Connection type: Mobile internet Send user identity info:

3/3

Esc Config Store



Edit GNSS contact

NTRIP Configuration

Use NTRIP: Use NTRIP v1.0:

Use proxy server:

Connect directly to Mountpoint:

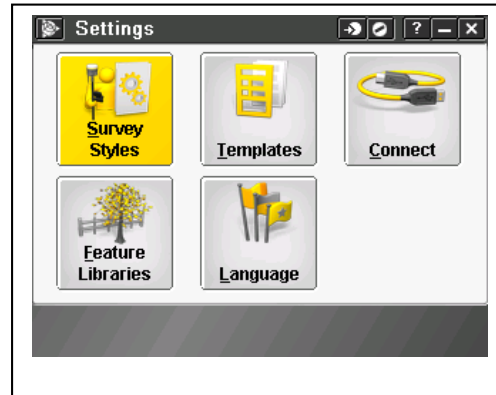
NTRIP username: C4G01 NTRIP password: *****

2/3

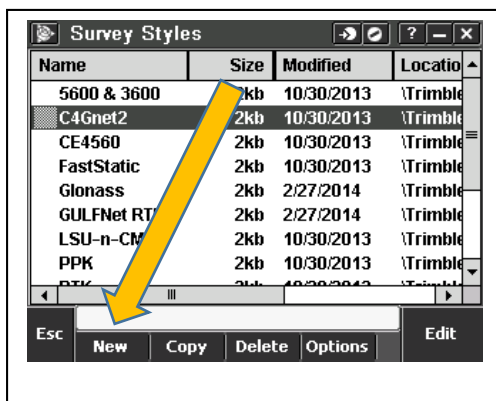
Esc Config Store

Entering a URL (RTN.LSU.EDU) is more desirable than a numerical IP address because if the servers change IP, the URL stays the same simply pointing to the new IP. If the numerical IP is required, contact C4G for the most current. Click **Store**.

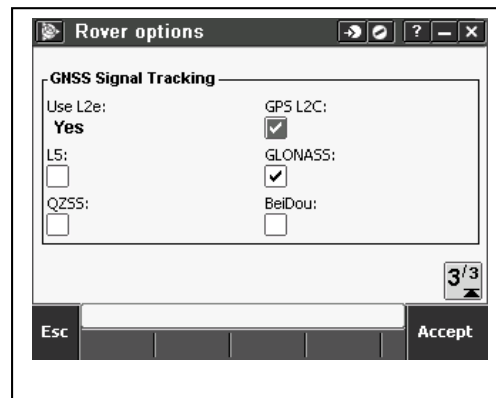
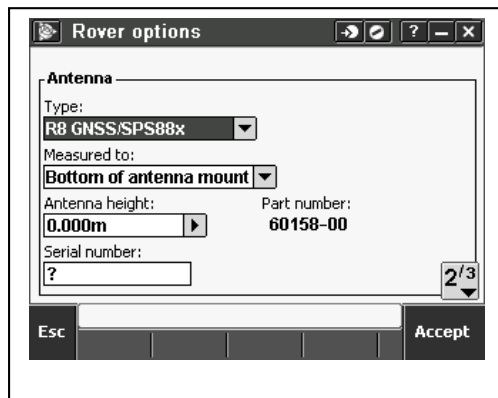
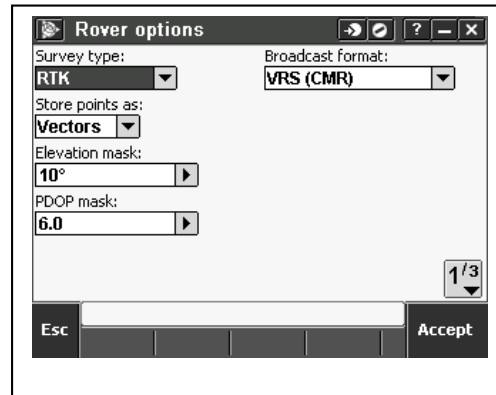
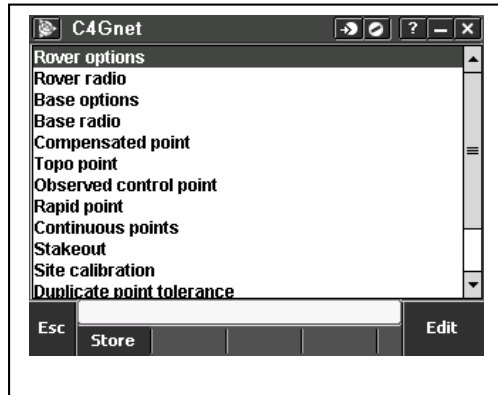
Picking the Survey Style



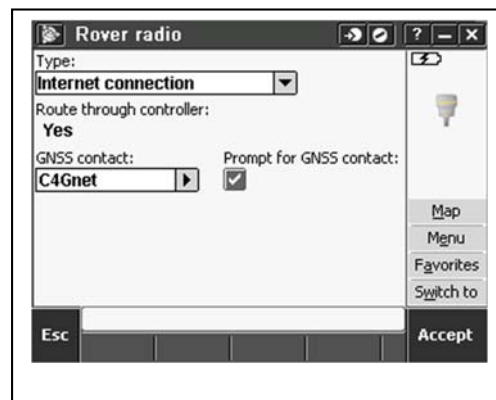
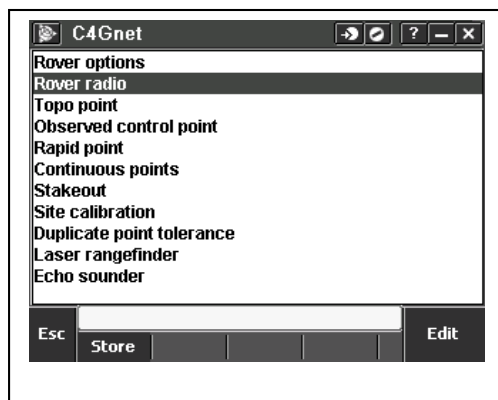
Create a **NEW** Survey Style.



Rover Options



Rover Radio



Topo Point

C4Gnet

Rover options
 Rover radio
Topo point
 Observed control point
 Rapid point
 Continuous points
 Stakeout
 Site calibration
 Duplicate point tolerance
 Laser rangefinder
 Echo sounder

Esc Store Edit

Topo point

Auto point step size: Quality control: **QC 1 & QC 2** ▾
 Auto store point: Occupation time:
 Number of measurements:

Precision

Auto tolerance:

Esc Accept

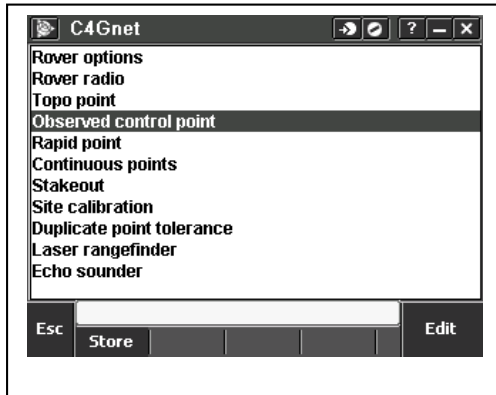
Topo point

Store RTK initialized only:

Auto abandon:

Esc Accept

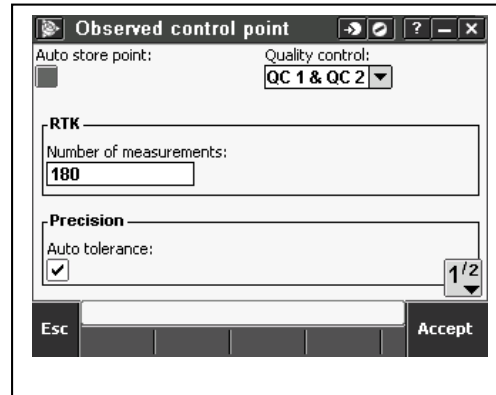
Observed Control Point



C4Gnet

- Rover options
- Rover radio
- Topo point
- Observed control point**
- Rapid point
- Continuous points
- Stakeout
- Site calibration
- Duplicate point tolerance
- Laser rangefinder
- Echo sounder

Esc Store Edit



Observed control point

Auto store point: Quality control: QC 1 & QC 2

RTK

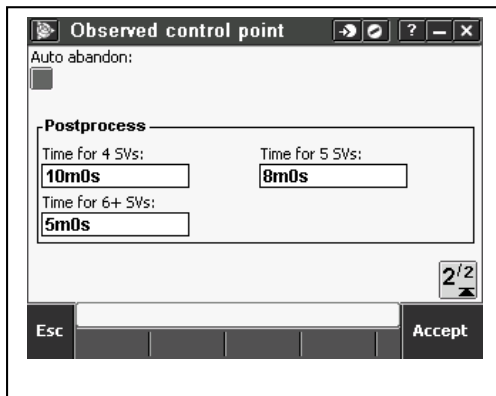
Number of measurements: 180

Precision

Auto tolerance:

1/2

Esc Accept



Observed control point

Auto abandon:

Postprocess

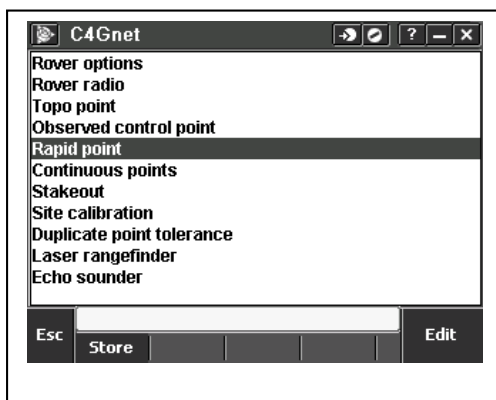
Time for 4 SVs: 10m0s Time for 5 SVs: 8m0s

Time for 6+ SVs: 5m0s

2/2

Esc Accept

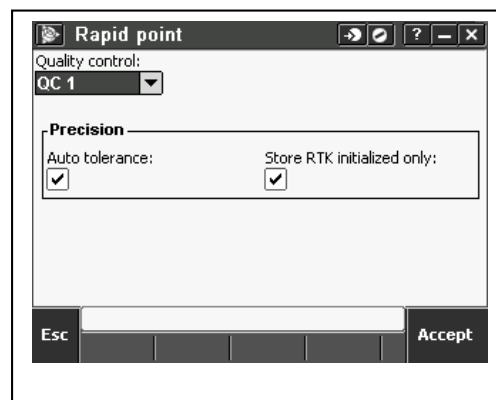
Rapid Point



C4Gnet

- Rover options
- Rover radio
- Topo point
- Observed control point
- Rapid point**
- Continuous points
- Stakeout
- Site calibration
- Duplicate point tolerance
- Laser rangefinder
- Echo sounder

Esc Store Edit



Rapid point

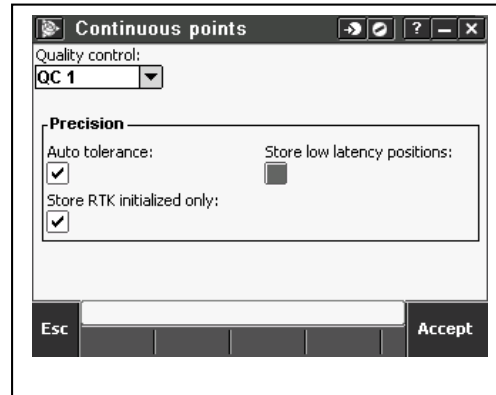
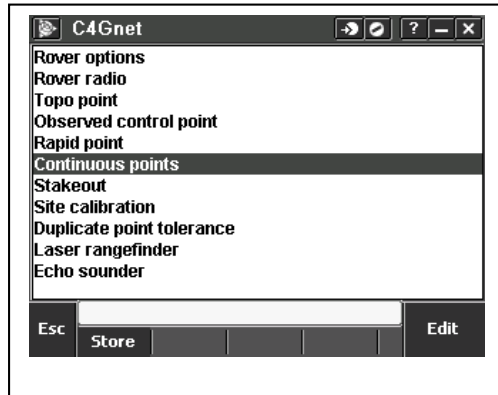
Quality control: QC 1

Precision

Auto tolerance: Store RTK initialized only:

Esc Accept

Continuous Points



Stakeout

C4Gnet

Rover options
 Rover radio
 Topo point
 Observed control point
 Rapid point
 Continuous points
Stakeout
 Site calibration
 Duplicate point tolerance
 Laser rangefinder
 Echo sounder

Esc Edit

Stakeout

As-staked point details

View before storage: Horizontal tolerance:

Point staked deltas format: Line staked deltas format:

Arc staked deltas format: DTM staked deltas format:

Road staked deltas format:

Esc Accept

Stakeout

Alignment staked deltas format:

As-staked name:

As-staked code:

Store grid deltas:

Esc Accept

Stakeout

Display

Display mode: Display orientation:

Deltas (points): Deltas (other):

DTM: Display cut/fill to DTM:

V. Offset to DTM:

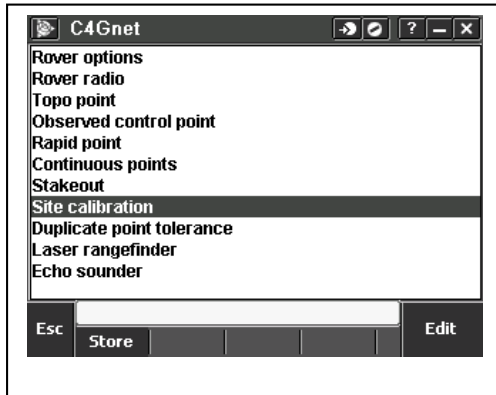
Esc Accept

Stakeout

Remove staked point from list: Auto measure:

Esc Accept

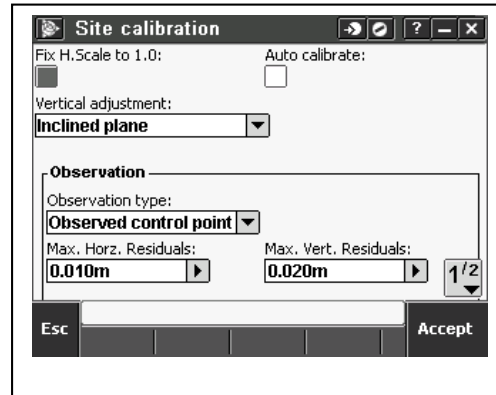
Site Calibration



C4Gnet

- Rover options
- Rover radio
- Topo point
- Observed control point
- Rapid point
- Continuous points
- Stakeout
- Site calibration**
- Duplicate point tolerance
- Laser rangefinder
- Echo sounder

Esc Store Edit



Site calibration

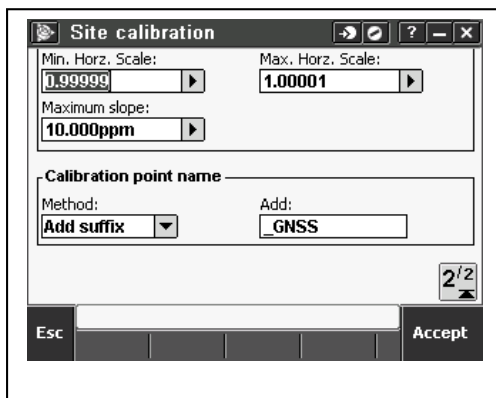
Fix H. Scale to 1.0: Auto calibrate:

Vertical adjustment:
Inclined plane

Observation
Observation type:
Observed control point

Max. Horz. Residuals: 0.010m Max. Vert. Residuals: 0.020m 1/2

Esc Accept



Site calibration

Min. Horz. Scale: 0.99999 Max. Horz. Scale: 1.00001

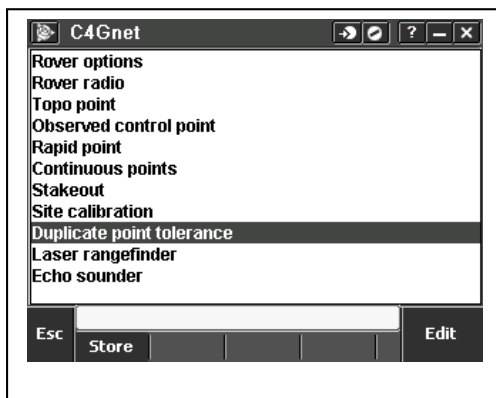
Maximum slope: 10.000ppm

Calibration point name
Method: Add suffix Add: _GNSS

2/2

Esc Accept

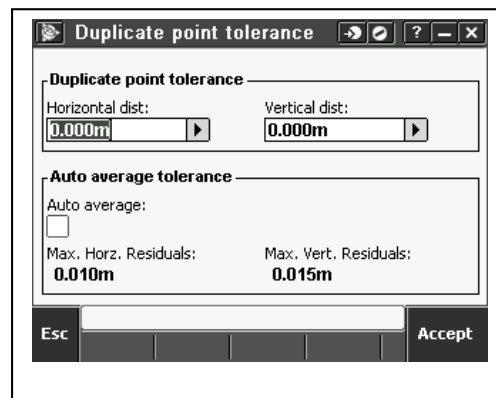
Duplicate Point Tolerance



C4Gnet

- Rover options
- Rover radio
- Topo point
- Observed control point
- Rapid point
- Continuous points
- Stakeout
- Site calibration
- Duplicate point tolerance**
- Laser rangefinder
- Echo sounder

Esc Store Edit



Duplicate point tolerance

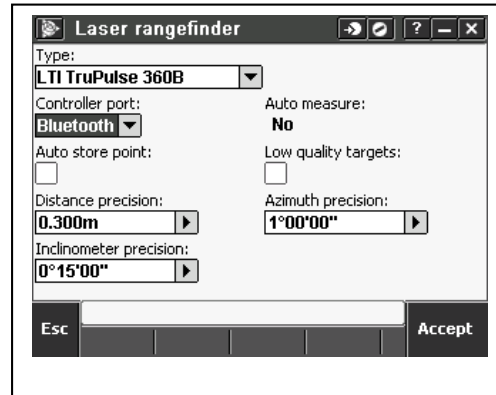
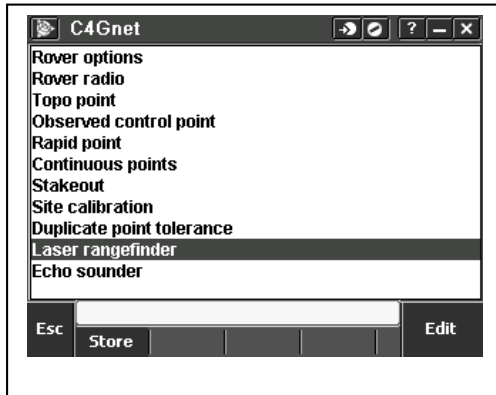
Horizontal dist: 0.000m Vertical dist: 0.000m

Auto average tolerance
Auto average:

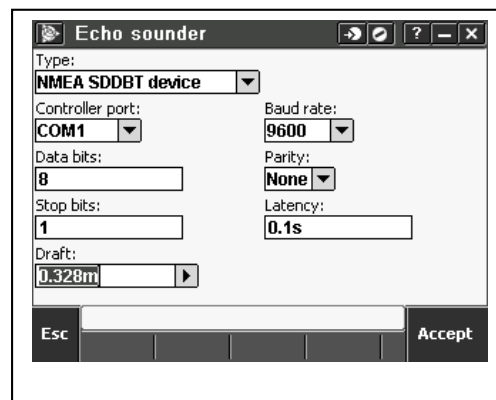
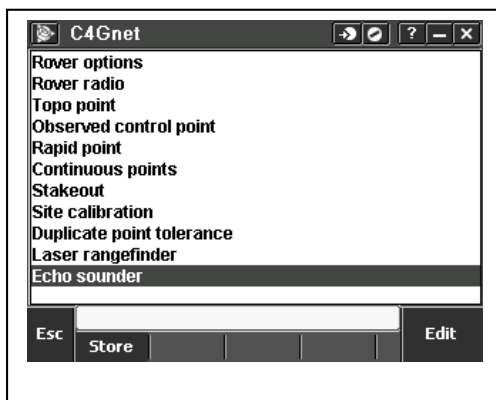
Max. Horz. Residuals: 0.010m Max. Vert. Residuals: 0.015m

Esc Accept

LASER Rangefinder



Echo Sounder



J. Anthony Cavell, PLS, CFedS

July 2014